

40.1 sq.m. (431 sq.ft.) approx.



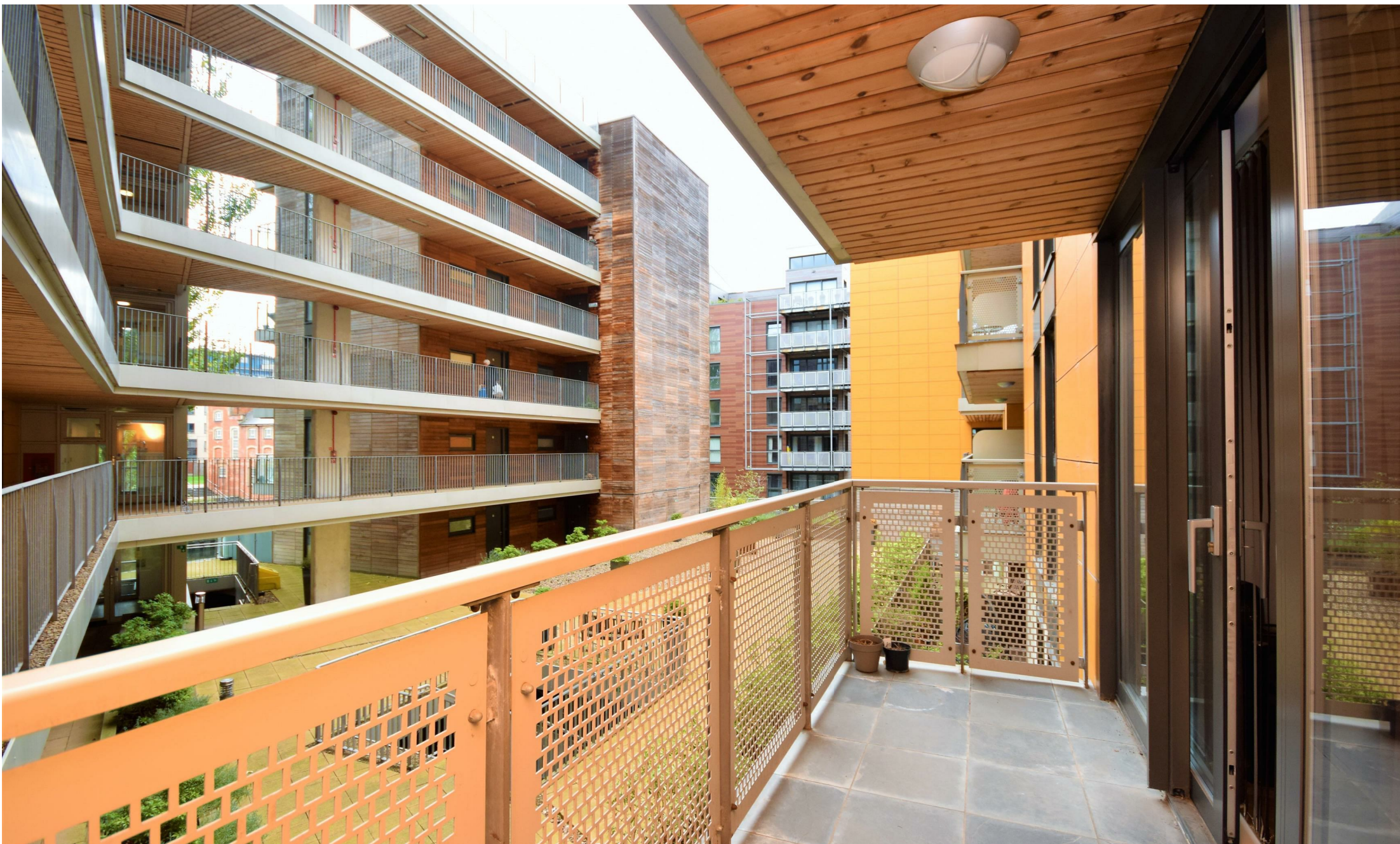
TOTAL FLOOR AREA: 40.1 sq.m. (431 sq.ft.) approx.

Whilst every attempt has been made to ensure the accuracy of the floorplan contained here, measurements of doors, windows, rooms and any other items are approximate and no responsibility is taken for any error, omission or mis-statement. This plan is for illustrative purposes only and should be used as such by any prospective purchaser. The services, systems and appliances shown have not been tested and no guarantee as to their operability or efficiency can be given.
Made with Metropix ©2022

Energy Efficiency Rating

	Current	Potential
Very energy efficient - lower running costs		
(92 plus) A		
(81-91) B		
(69-80) C		
(55-68) D		
(39-54) E		
(21-38) F		
(1-20) G		
Not energy efficient - higher running costs		
England & Wales		EU Directive 2002/91/EC

Disclaimer – In accordance with the Property Misdescriptions Act, the company gives notice that all descriptions, references to condition, necessary permissions for use and other details are given in good faith and believed to be correct, but any intending lessees do not rely on them as statements of fact, but must satisfy themselves by inspection or other means, as to their accuracy.



Geoffrey Watling Way | Norwich | NR1
Guide Price £110,000



abbotFox presents this spacious, purpose built studio apartment. Situated within the popular Riverside development, this home offers a convenience hard to match, with a wealth of local amenities within easy walking distance. Accommodation comprises a generous open plan kitchen / living / bedroom space, with a three piece shower room and private balcony. An ideal opportunity for any buy-to-let investor, an internal viewing comes highly recommended.

Guide price £110,000 - £120,000

